

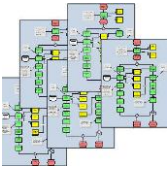
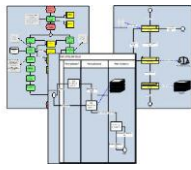

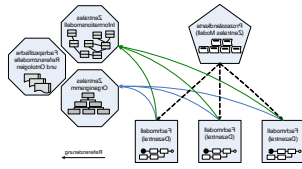


# Levels of Awareness in Business Process Modeling

(Copyright: Semtation GmbH, 2010)

Process Illustration	
<p><b>Process Documentation</b></p> 	<p>You have recognized that knowledge and design of your business processes greatly affects <b>company success</b>?</p> <p>➔ For sure you have started process documentation.</p>
<p><b>Process Visualization</b></p> 	<p>You have recognized that <b>mere text</b> or tables describing processes cause <b>a lot of effort</b> while writing and only little understanding by readers?</p> <p>➔ Then you are probably out there, looking for a graphical tool to visualize your processes.</p>
<p><b>Process Modeling</b></p> 	<p>You have recognized that a mere graphical tool (like e.g. Powerpoint) does not suit the <b>complexity of your processes</b> and that dependencies between drawings need a lot of effort to be administered?</p> <p>➔ Then you need a tool for process modeling.</p>
Process Modeling using SemTalk®	
<p><b>Notation independent process modeling</b></p> 	<p>You have recognized that you only benefit from <b>process models</b> if they are <b>understood and accepted</b> by the affected users?</p> <p>➔ Then you need a tool that provides you with a notation adequate for your users.</p> <p>➔ <b>SemTalk®</b> allows you to select the notation that is most easily understood by your users. If there is a need, you can combine several notations.</p>
<p><b>Microsoft Office Visio based Modeling</b></p> 	<p>You have recognized that your process models are only accepted and administered if they are taken care of by people that are close to those users that work on the described process?</p> <p>➔ Then you need a tool that can be handled by people working in process owner departments.</p> <p>➔ <b>SemTalk®</b> is based on Microsoft Office Visio and its´ handling is quite similar to Visio.</p>
<p><b>Distributed Process Modeling</b></p> 	<p>You have recognized that one central model of all of your processes cannot be implemented efficiently?</p> <p>➔ Then you need a tool that supports decentralized modeling with a central coordination.</p> <p>➔ <b>SemTalk®</b> provides your distributed modeling with innovative concepts and proven technology.</p>

<b>Integration into Existing IT Infrastructure</b>	<p>You have recognized that it would be nice to use your existing rights management and <b>document infrastructure</b>?</p> <ul style="list-style-type: none"> <li>➔ Then you need a tool that integrates neatly with your existing systems.</li> <li>➔ <b>SemTalk®</b> models are usual documents and therefore can be stored like usual documents. SemTalk integrates deeply with document management systems or portals, especially with <b>Microsoft Office SharePoint</b>, which is the <b>modeling server</b> for SemTalk models and model elements.</li> </ul>
<b>Open Standard Interfaces</b>	<p>You have recognized that your <b>process models serve in different scenarios</b>, e.g. for IT system configuration, workflow definition or as an organizational handbook?</p> <ul style="list-style-type: none"> <li>➔ Then you need a tool that is flexible enough to convert models into a format that could be imported in other applications.</li> <li>➔ <b>SemTalk®</b> is based on XML structures; therefore reuse of SemTalk models in other applications is rather easy.</li> </ul>
<b>Highly Scalable Modeling Architecture</b>	<p>You have recognized that <b>large models</b> cannot be maintained even in centralized systems?</p> <ul style="list-style-type: none"> <li>➔ Then you need a tool that supports distributed modeling for content as well as in a technical way, that has to be highly scalable.</li> <li>➔ <b>SemTalk®</b> is implemented in an easy and fast way; modeling architecture can be adapted evolutionarily to your organisation's needs.</li> </ul>

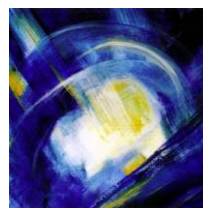
**SemTalk is based on innovative modeling concepts and helps you coping with the above mentioned problems. This means that benefit of SemTalk process models is very high compared to other ways of modeling.**

On top SemTalk offers you the following functionality:

- A strong simulation component
- A flexible reporting tool
- An open graphical meta model that allows you to update your modeling notation in an easy way
- Easy translation of models in as many languages as you like
- Other known features like HTML export, interfaces to Microsoft Office, etc.
- Interfaces towards SAP and BizTalk
- Concept based process modeling for higher model quality and easy maintenance
- Support of different modeling notations (EPC, RACI, PROMET, Flow Chart, BPMN, SAP's component view...)

For further questions please contact us here:

Semtation GmbH  
Geschwister-Scholl-Straße 38  
D-14471 Potsdam  
Tel.: +49-331-581 39 36  
Fax: +49-331-581 39 29  
Mail: [sales@semtalk.com](mailto:sales@semtalk.com)  
[www.semtalk.de](http://www.semtalk.de)



**SemTalk®**